

CONFEST

Wednesday 28th December 2005
to Tuesday 3rd January 2006

on **Gulpa creek**

and **Easter ConFest** Friday 14th April 2006 to Tuesday 18th April 2006

Tickets only at the ConFest Gate

\$60

The Down to Earth Co-op Society has been organising ConFest (*Conference/Festival*) for the last 29 years.

We are a completely volunteer organisation.

The first ConFest was held at Cotter River, ACT in 1976 aiming to transforming society.

Down To Earth Vic still organises ConFest; these days every Summer and Easter.

It's a camping, nature, tribal gathering, seeking to celebrate and explore the same ideals that it started with.

For first timers ConFest can be challenging. Set up a camping spot, relax, avoid sunburn and make friends.

ConFest is essentially a healing, personal growth gathering; a sharing of ideas about what it means to be a 'happy', 'whole' human (from humus meaning earth) being.

Watch for the DTE signs, as you near the Confest site.

Enter through the stockyard

How to get to ConFest

From Melbourne go to Echuca/Moama and follow the Cobb Highway north. The ConFest turn off is on your right 17 Km past

From Sydney go to Deniliquin and then south on the Cobb Highway. The ConFest turn off is on your left 16 Km past Deniliquin.

NO PETS
allowed at all.

ConFest is a 'clothes optional' Gathering.

Arriving after sunset.

If you arrive late you will be asked to doss down until morning. Cars are not driven on the site at night.

The Site may close at 11pm and reopen at 8am

Please pack your sleeping gear so that it's easily accessible.

Volunteering A commitment to contribute two hours help is part of your ticket. Task rosters will be set up in the Information/Volunteer tent.

Fill out a time in the activity of your choice when you arrive or after you've set up. You are needed to help ConFest run smoothly.

Cooking will be done in village style fire circles. Gas BBQ's and stoves are provided NO small fires are allowed as the safety consideration for all of us is of key importance.

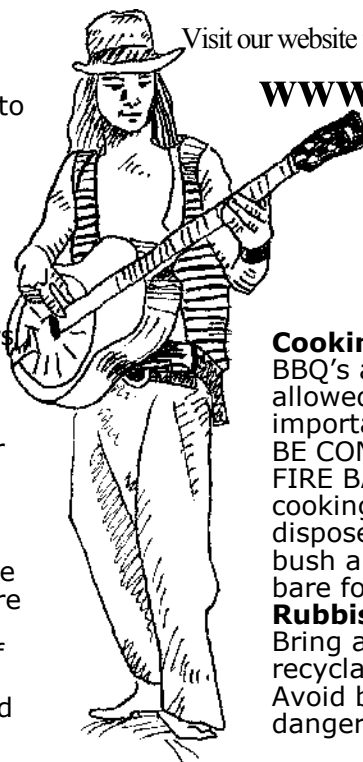
Fires only permitted in authorised areas

Visit our website for the latest information

www.dte.org.au

Email:

folks@dte.org.au



Cooking will be done in village style fire circles. Gas BBQ's and stoves are provided NO small fires are allowed as the safety consideration for all of us is of key importance. Fires only permitted in authorised areas BE CONSCIOUS and considerate.

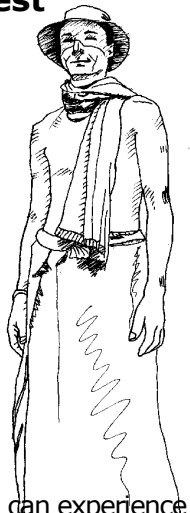
FIRE BAN days must be adhered to, so also bring "no cooking needed" tucker. SMOKERS Please remember to dispose of your butts with care. ConFest is out in the bush and fire is a major worry, also many people are bare foot.

Rubbish

Bring as little as possible. Please take your rubbish and recyclables home. Organic matter can be put in a toilet. Avoid bringing glass as it breaks easily and becomes dangerous for bare feet.

At ConFest you can experience the profound peace and incredible beauty of nature and also satisfy and develop your social being.

You have time to sit and watch the sun set. ConFest sites are environments that have much of their natural irregularities intact so you get different, unexpected things happening.



15 year old or under **\$1**

